

New Frimley Park Hospital Update

Issue 1: March 2024

Welcome to the first newsletter dedicated to the development of our new Frimley Park Hospital.

I am delighted that Frimley Park has been included in the government's new hospital programme which will see us building a state-of-the-art replacement for the current hospital.

Through these newsletters, you will be among the first to hear our latest updates around the new hospital build and site location, be able to view exclusive content and videos, and feedback your views during our engagement periods.

This month's issue features information and updates about Reinforced Autoclaved Aerated Concrete (RAAC) at Frimley Park Hospital, the Hospital 2.0 design, the outcomes from our initial engagement earlier this year, and other ways we are improving our hospitals for our patients.

I know how important Frimley Park Hospital is for our patients, local communities, and staff - and our new hospital gives us a unique opportunity to transform local healthcare for generations to come. This is why future issues will give exclusive insights into the team behind the programme, and additional opportunities to have your say about the new hospital.

I want you to be part of this journey with us. Please [sign up online](#) to receive these newsletters.

Nigel Foster - Senior Responsible Officer, leading the programme on behalf of Frimley Health

Our story so far

Last year Frimley Health was included in the government's new hospital programme, which will see us build a brand-new state-of-the-art replacement for Frimley Park Hospital. We are delighted to be given this national investment for a once-in-a-generation opportunity to improve healthcare for the communities we serve.

So how did we get here?

Frimley Park Hospital was built in the 1970s using **Reinforced Autoclaved Aerated Concrete (RAAC)**, which makes up around [65 per cent of the current building](#). RAAC deteriorates over time and is now at the end of its life, posing a potential risk to patients, visitors, and staff. The hospital wasn't built to accommodate modern healthcare, and as it turns 50 this year, it's already exceeded its expected lifespan.

To ensure everyone's safety, our teams carry out ongoing RAAC surveillance and maintenance. However, the cost of maintaining a safe environment by reinforcing existing RAAC planks is very high and will only continue to be effective for a few more years.

Building a new hospital on the current site is not a viable option due to the high cost and significant disruption this would cause for our patients, staff, and hospital services.

As a result the new Frimley Park Hospital will be on a different site. It will also be a **Hospital 2.0 build**, which is a new national standardised design for [future hospitals](#). Hospital 2.0 designs decrease the average time to develop and build hospitals and benefit patients and staff through sustainable, digital solutions and an optimised hospital layout. More information about work underway on the hospital's possible locations are in the 'next steps' section of this newsletter.

We are going to embrace this opportunity to develop one of the best healthcare facilities in the country, and we can't wait to bring this new hospital to life.



Joists being installed to support RAAC

[Managing RAAC at Frimley Park](#)

Engaging with the public

Between 24 November 2023 – 7 January 2024 we held our [first engagement period](#) to find out what is most important to our staff, patients and communities when considering a site for the new hospital.

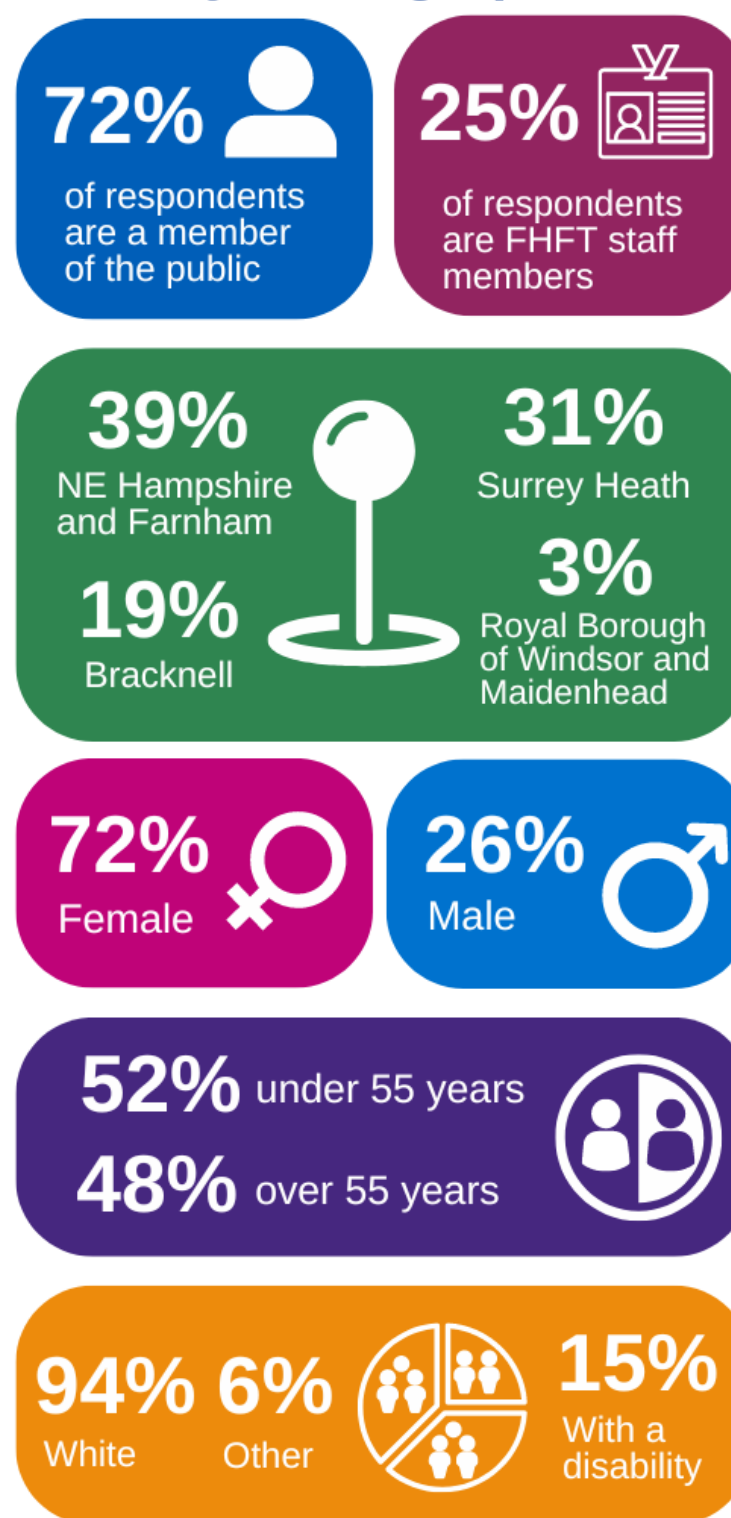
We wanted to know what you thought of the criteria we were planning to use to assess the sites, specifically around the site location, planning, and buying the site.

Over a period of six weeks, we held four public events, one drop-in session and eight pop-up stands throughout our communities. This was alongside our online survey and numerous staff events and meetings. A huge thank you to everyone for engaging with us and sharing your views.

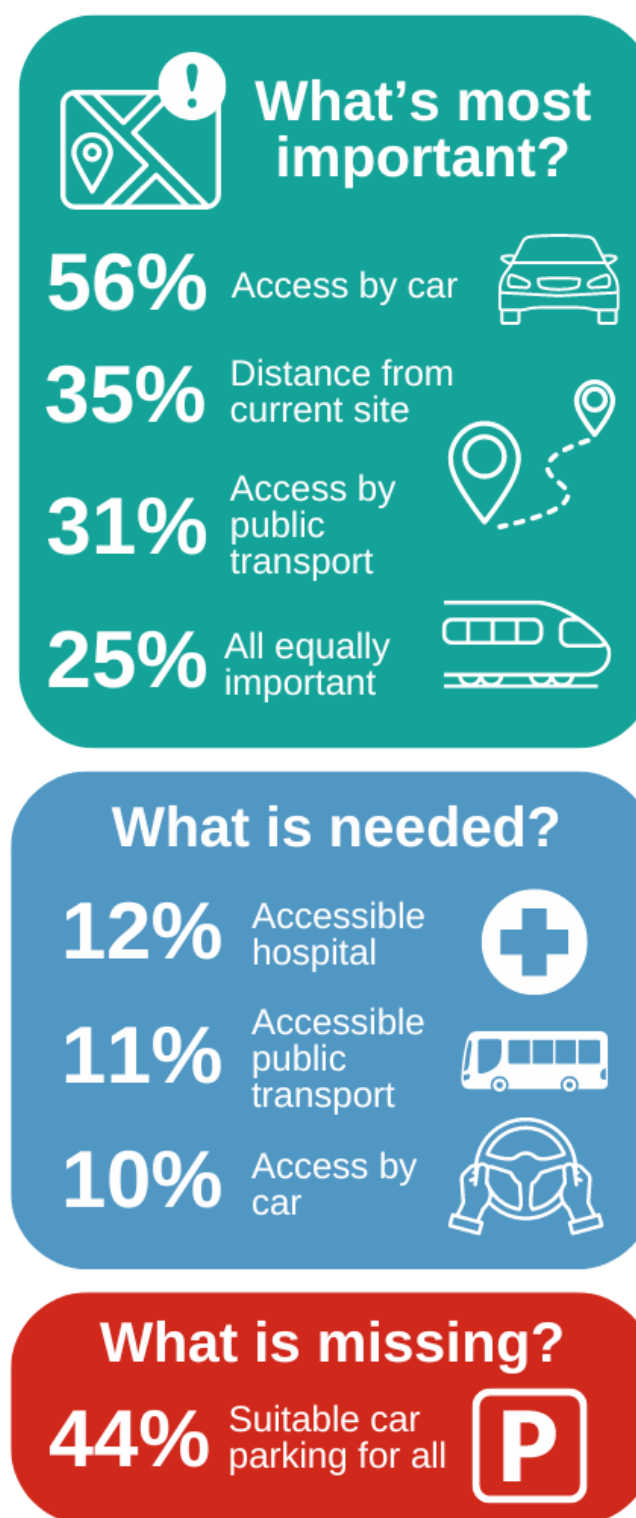
We have now published an independent report on the views, opinions, and feedback from our initial engagement exercise. This is available in full on our [website](#). Alternatively, these graphics show what was most important to you around our new Frimley Park Hospital site location.

If you want to know more about the initial engagement period, you can watch the online session below to update you on the new Frimley Hospital, and our plans for identifying the new site.

Key demographics



Site location



What's happening next?

We identified several priority sites as planned by February 2024 as potential locations for the new Frimley Park Hospital and are currently completing detailed analysis of these, including taking into consideration your feedback, as we enter into the necessary commercial elements of land acquisition that will lead to the final purchase.

We are committed to involving and engaging our stakeholders, patients, staff and the wider public as much as we can, so we will share this information as soon as we are able.

More detail on the New Hospital Programme, including future events and engagement opportunities will be added to our [website](#). If you have any questions or require further information, you can email the team at: fhft.newfphcomms@nhs.net.

Trust updates: Always improving

We provide NHS services across 10 hospital sites for around 900,000 people in Berkshire, Hampshire, Surrey, and south Buckinghamshire. Our aim is simple. We want to provide the highest quality healthcare possible to you, so we are continually transforming services across our hospitals for the benefit of our local communities.

Slough diagnostic centre given the green light

We have received planning approval to commence work on a brand new £25 million state-of-the-art NHS diagnostic centre. The Community Diagnostic Centre (CDC) is planned to open in Slough in early 2025 and will transform health services in the area with faster and easier access to diagnostic services for local people.

The centre will be open seven days a week, 12 hours a day, and will provide up to 150,000 extra tests per year for the local community. It will have access to the latest technology with magnetic resonance imaging (MRI) scanners, computerised tomography (CT) scanners and ultrasounds, and will diagnose and improve outcomes for patients with conditions including cancer and heart disease.

[Read more about Slough CDC](#)

Major milestone for £49m diagnostic unit

A [new £49 million building](#) is set to be opened at Frimley Park Hospital in 2025. This extension, which is being built using modern methods of construction, will provide 74 additional, much needed inpatient beds and a new state-of-the-art diagnostic and imaging unit. This essential additional bed capacity will deliver a greatly improved environment for patients and staff.

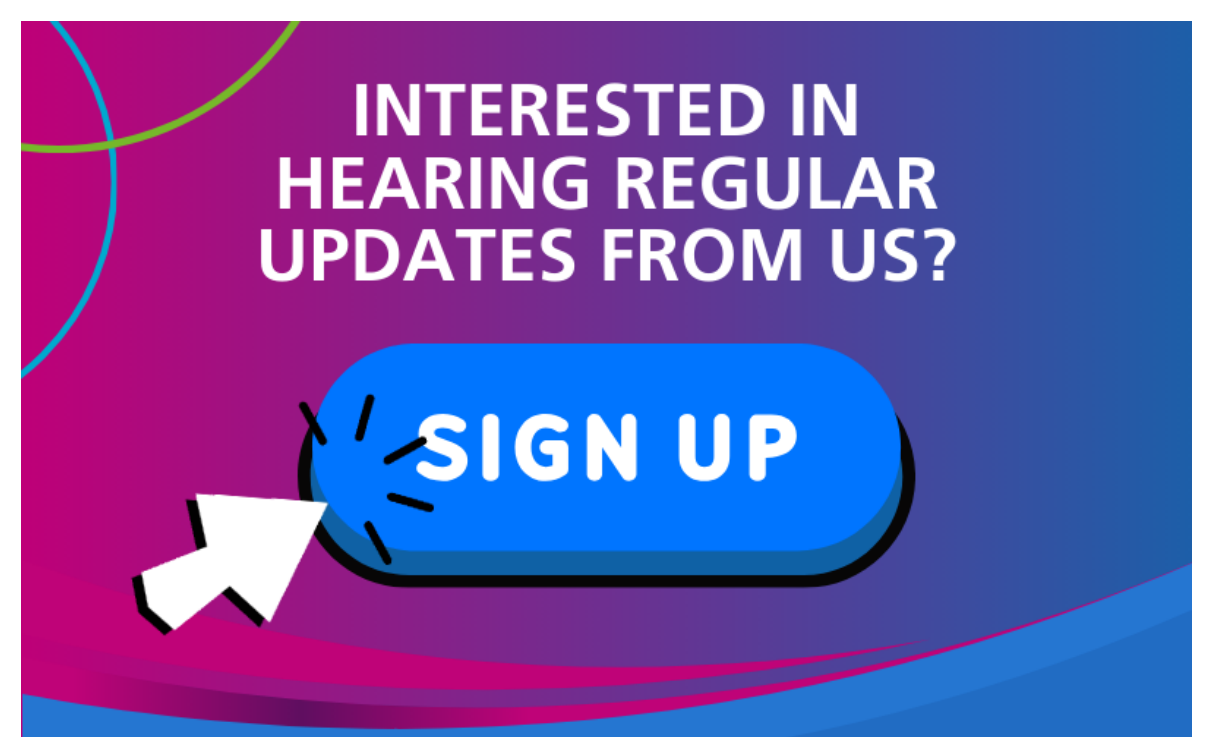
It will also enable more efficient ward refurbishments and reduce the disruption caused by the ongoing remedial work to keep areas affected by reinforced autoclaved aerated concrete (RAAC) safe.

As part of our new hospital programme, a detailed analysis will be undertaken for the whole of the existing site to ensure the best possible use of the newer building areas after 2030 that do not contain any RAAC.

Sign up to our newsletter

If you have been forwarded this newsletter and would like to subscribe for monthly updates, please [sign up online](#).

Do you want more regular updates? Follow us on our channels below.



Please share this email with your
friends and family
and don't forget to share your feedback

[Unsubscribe](#)

Committed to excellence

Working together

Facing the future

