

## Resources

- The library currently has a **book stock** of over 5000 items, arranged in subject order and also enables access to a large number **electronic journals**.

We request that **University of Surrey students** present course **reading lists** at the library Enquiry Desk on their first visit. A member of staff will take a copy. This helps to ensure the ongoing relevance of stock to students.

- **NICE Evidence** provides online access to the Medline, Cinahl, BNI, PsycInfo, Embase, HMIC, Health Business Elite and AMED databases. These resources require an **NHS OpenAthens** password. To obtain, simply complete the self-registration form on the NHS Evidence website at: [www.evidence.nhs.uk](http://www.evidence.nhs.uk)
- Access to NHS funded to full text e-journals and medical databases is available for the **duration of your placement**.
- Library facilities can be accessed **24/7** with a Trust ID badge.
- Quiet **study space**.
- A self-service/ coin-operated **photocopier** is also available.

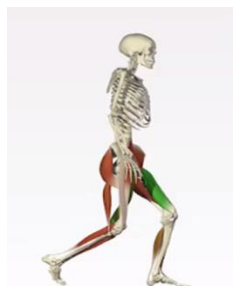
## Services:

### **Lending:**

- Library members may **borrow up to 8 books** at a time.
- A maximum of 2 can be from our **short loan collection**.
- **Loan periods** are 2 weeks for short and 4 weeks for main collection items.
- A limited number of **renewals** can be made.
- The **book returns box** is located outside the main library entrance.
- **Fines** are levied for late returns as follows:

Short Loan Collection items incur 20p per day fines if not returned on or before the date stamped for return.

Failure to respond to reminders for **any overdue items** will result in an invoice for replacement cost of items, together with outstanding fines + £10 administration fee.



**Anatomy.TV is online and interactive - and available to students on placement**

## IT Facilities:

- The library has a dedicated IT suite enabling access to the Intranet, Internet and MS Office.  
**Students on placement are entitled to a Trust log in.** This is needed in order to access Trust policy documents on the Intranet. Contact your Mentor or the person you report to on your placement to obtain.
- Printing is available throughout the Trust via the "Follow Me" printing system.
- An online catalogue is available to help you find books held in the library.
- The **library website** at [www.frimleyparklibrary.nhs.uk](http://www.frimleyparklibrary.nhs.uk) has a page containing useful information and links, specifically for students on placement.

### **Additional help:**

**Training:** You may book a one-to-one or small group session to help you find and use the resources you need.

**Helpsheets** are available for our services and resources. Should you need help finding information or accessing NHS Athens resources whilst on placement, please **contact Library Staff** who will be happy to assist you.

## Online interactivity for library users:

The Library is now linked to the Kent, Surrey and Sussex regional healthcare library management system.

On request, a member of the library team will issue you with a **unique PIN** which, together with your **Library ID number**, will enable you to access information about your current **loans**, make **renewals** and **request** books etc online via

[www.southeastlibrarysearch.nhs.uk](http://www.southeastlibrarysearch.nhs.uk)

You will also find the **regional library catalogue** at this web address.

## Space for group study

Students who are registered library members are welcome to use our new **Library Teaching Room**. This is ideal for course-based discussions or to practice presentations etc. The room can accommodate small groups (2-6 people) and is fitted with data points and projector. Use of this space **must be booked in advance** with the Library Team.

## Health Sciences Library Frimley Park Hospital

Portsmouth Road  
Frimley  
Camberley  
Surrey  
GU16 7UJ

### The library is open:

9am – 6pm Monday to Thursday  
9am – 5pm Friday

### Telephone:

01276 604168

(Loan renewals and enquiries)

### E-mail:

[FPHLibrary@fhft.nhs.uk](mailto:FPHLibrary@fhft.nhs.uk)

### Website:

[www.frimleyparklibrary.nhs.uk](http://www.frimleyparklibrary.nhs.uk)



@fph\_library



Frimley Park Hospital Library

Committed To Excellence Working Together Facing The Future

Nov 2016

Frimley Health   
NHS Foundation Trust

## HEALTH SCIENCES LIBRARY



Guide for Nursing  
& Midwifery Students  
on placement